

LOCATION MAP



**GLOBAL LIFE.  
WORLD-CLASS  
EXPERIENCE.**



MAHARERA REGISTRATION NO.:  
PHASE-1 - P52000006318 | PHASE-2 - P52000022708  
<https://maharera.mahaonline.gov.in>

DESIGN ARCHITECT: Dimensions Arch. Pvt. Ltd. | RCC CONSULTANT: Structural Concept Designs Pvt. Ltd. | INTERIOR CONSULTANT: Vini & Associates | LANDSCAPE ARCHITECT: Newarch Landscapes LLP | MEP CONSULTANT: Anil Verma & Associates

PHASE 1 READY POSSESSION

Site Address: Sai World City, Palaspe Phata Junction, Panvel - 410 206.  
Corporate Office: Paradise Lifespaces LLP, 1701, Satra Plaza, Plot No. 19 & 20, Sector - 19D, Vashi, Navi Mumbai.  
Tel.: 022 2783 1000, 022 2783 9000 | Email: enquiry@paradisegroup.co.in  
[www.paradisegroup.co.in](http://www.paradisegroup.co.in) | [www.saiworldcity.co.in](http://www.saiworldcity.co.in) | Follow us on:

Disclaimer: All the specification, design, facilities, dimensions, etc. are subject to the approval of the respective authorities & developers and would be changed if necessary. The discretion remains with the developers.

thoughttrains



# GLOBAL LIVING

## A TRIBUTE FROM INDIA TO THE WORLD

Where quality of life is at its peak. Where serene green environs compliment the nature's beauty. Where leisure time becomes the best family time and lifestyle incarnates the cosmopolitan life with famous landmarks of the world surrounding you. An unparalleled living, where feeling of being alive is awesome, making every moment, a memory of a lifetime.

A host of enlivening entertainment from across the world. A paradise of supreme health facilities ensuring the complete well-being. Where fashion & glitterati is around every corner. And standard of living is at par with the world, ensuring best of grandeur, class, security, safety and conveniences.

Here is an incredible global offering from India to the world that is accumulating universal lifestyle embellishments at world's newest destination called Sai World City at Panvel. Presenting a living that creates a world within a world, a living that makes you truly global.

NEW YORK



PARIS



ROME



DUBAI



SINGAPORE



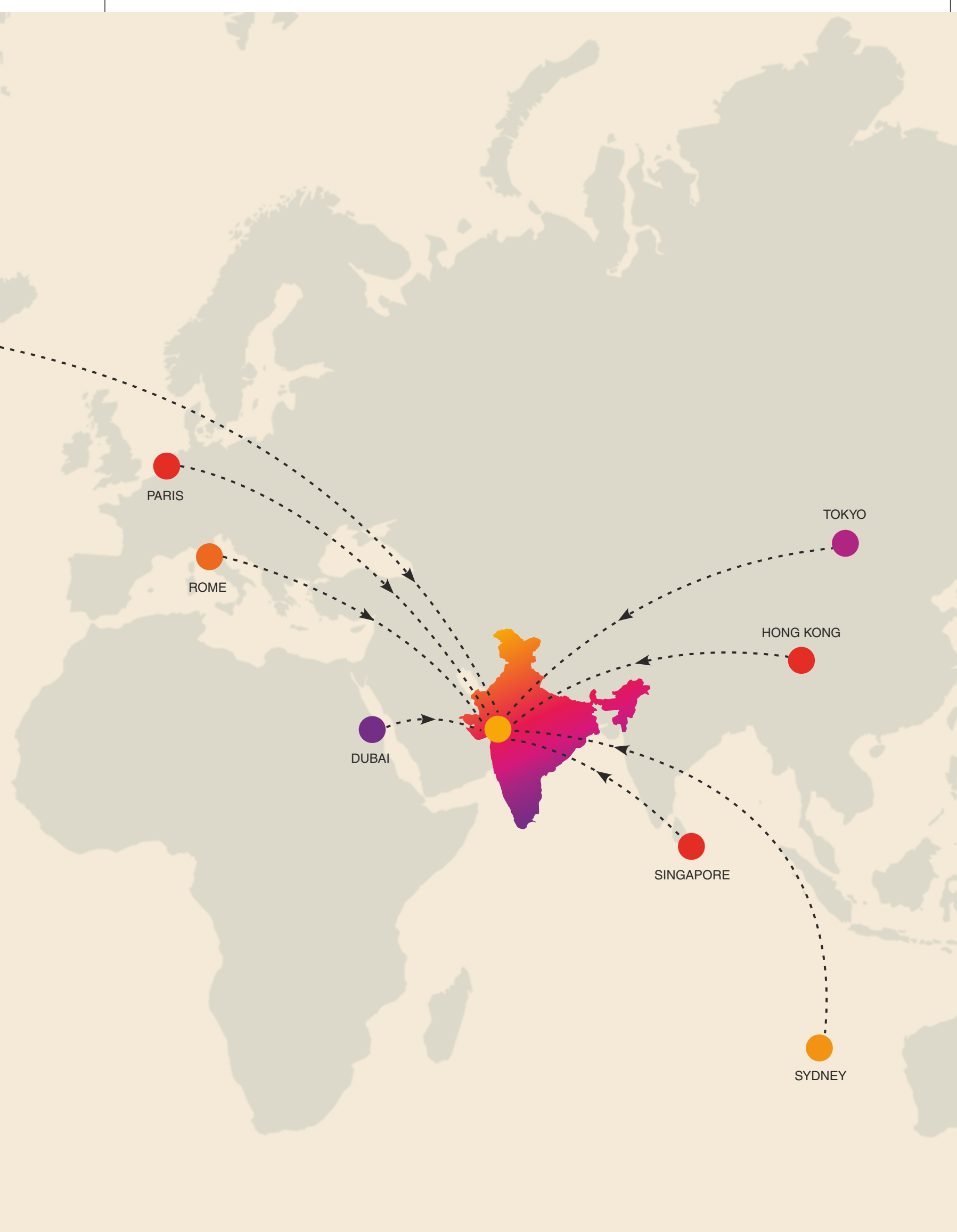
HONG KONG



SYDNEY



TOKYO





# A CITY WITH EVERYTHING OUTSTANDING

## A WORLD WITH EVERYTHING WITHIN

### GREEN ABUNDANCE

More than 15 acres of open spaces & landscaped area

### LEISURE ESCAPE

Ever-refreshing 2 colossal swimming pools, spas, relaxation zones

### HEALTH'S HEAVEN

World-class health clinics, fitness centres, jogging tracks & much more

### ENTERTAINMENT CENTRE

Most-entertaining clubhouses, party halls, discotheques & virtual gaming arcades

### SPORTS HUB

Energising sports activities including football, squash, lawn tennis, indoor games & more

### LUXURY'S ABODE

Home of best embellishments, well-designed spaces, exotic luxuries & technology

### FASHION EPICENTRE

Extravagant commercial spaces, brand stores, fine-dine restaurants, cafés and fashion streets

### BUSINESS PLATFORM

Advanced in-house business facilities like business centre, conference rooms, lounges and more

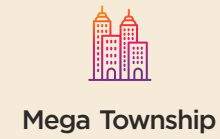
### SECURED WORLD

High-tech security & surveillance with control room, car code scanners, biometric entry and CCTVs

# A GLOBAL LIFESTYLE

THE SIGNATURE ADDRESS OF AN INTEGRATED WORLD

## PROJECT HALLMARKS





**GREEN CITY**

A MAGNIFICENT RESIDENTIAL TOWNSHIP OF 32 ACRES WITH WORLD-CLASS LIFESTYLE



**BUSINESS CITY**



**LUXURY CITY**



**ENTERTAINMENT CITY**



THEMED ENTERTAINMENT, SPORTS AND FASHION EMBELLISHMENTS INSPIRED BY THE FAMOUS CITIES OF THE WORLD

**SECURE CITY**

MULTI-ACRED OPEN GREEN SPACES WITH 45,000 SQ.FT. OF CLUB LIFE

**FASHION CITY**



**SAI WORLD CITY PANVEL**  
**MANY CITIES ONE WORLD**



**LEISURE CITY**



**HEALTH CITY**



LARGEST INTEGRATED RESIDENTIAL TOWNSHIP OF PANVEL WITH GLOBAL STANDARD BUSINESS, SECURITY & SAFETY FEATURES

**SPORTS CITY**

**ENTER INTO A REALM OF  
GLOBAL LIFESTYLE  
EXCLUSIVELY CRAFTED FOR  
A LUXURIOUS THEMED LIVING**



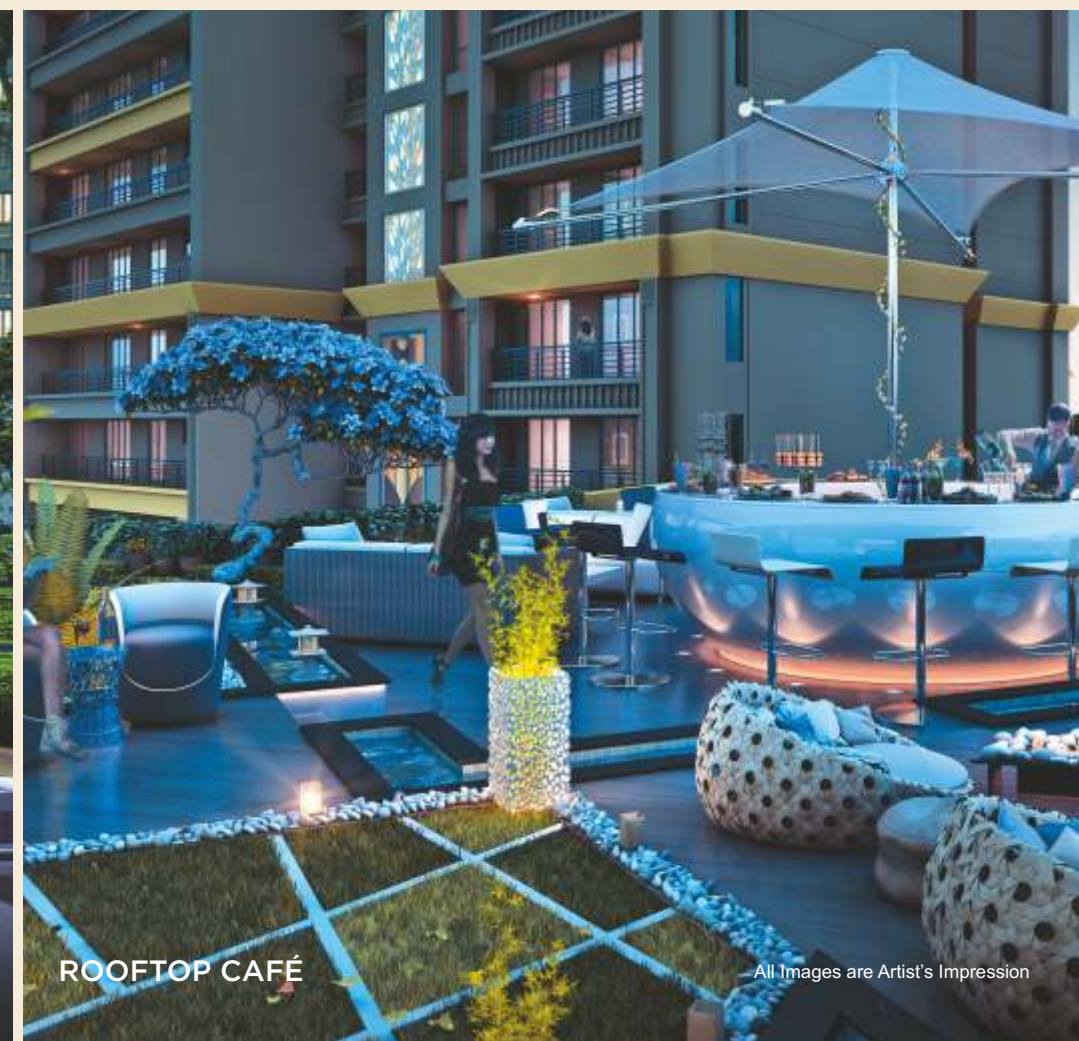
DESIGNER COURTYARD



SWIMMING POOL WITH PARTY DECK



MEDITATION AREA



ROOFTOP CAFÉ

All Images are Artist's Impression



PERFORMANCE STAGE



PALM COURT WITH SIT-OUTS



PODIUM SKY LOUNGE



KIDS PLAY ZONE



CYCLING & JOGGING TRACK



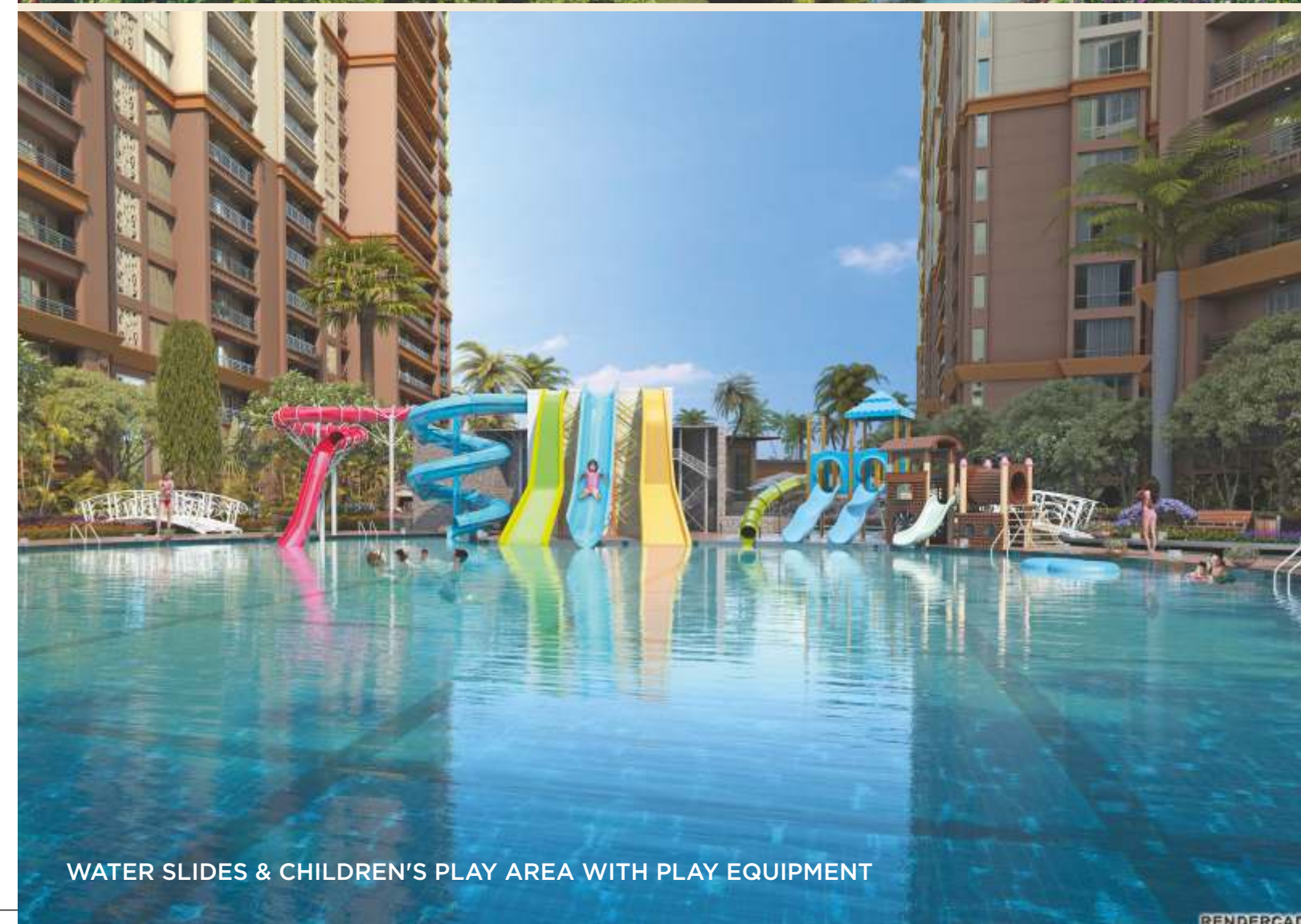
EXTRAVAGANT PARTY LAWN ATTACHED TO BANQUET HALL

All Images are Artist's Impression



MULTI-ACRED OPEN SPACES

Artist's Impression



WATER SLIDES & CHILDREN'S PLAY AREA WITH PLAY EQUIPMENT

RENDERCAD



All Images are Artist's Impression



**WORLD'S NEW  
LIFESTYLE AVENUE  
FEATURING A HOST OF  
UNPARALLELED AMENITIES**

# *Club* **VEGAS**

## **LUXURIOUS, G+5 STOREYED CLUBHOUSE**

- THEMED SCULPTURES LIKE STATUE OF LIBERTY, BIG BEN CLOCK TOWER, EIFFEL TOWER & MERLION
- EXTRAVAGANT PARTY LAWN ATTACHED TO BANQUET AREA
- MERLION SKY DECK WITH SWIMMING POOL
- LAVISH BANQUET HALL
- SAI BABA MANDIR





MERLION SKY DECK WITH SWIMMING POOL



PEACEFUL SAI BABA TEMPLE WITH MUSICAL FOUNTAIN



MAGNIFICENT BANQUET HALL



MINI THEATRE



PRE-FUNCTION PARTY AREA



DJ & KARAOKE ROOM

All Images are Artist's Impression



FULLY-EQUIPPED AIR-CON GYMNASIUM WITH TRAINERS



SPA WITH MASSAGE ROOMS



INDOOR GAMES ARCADE



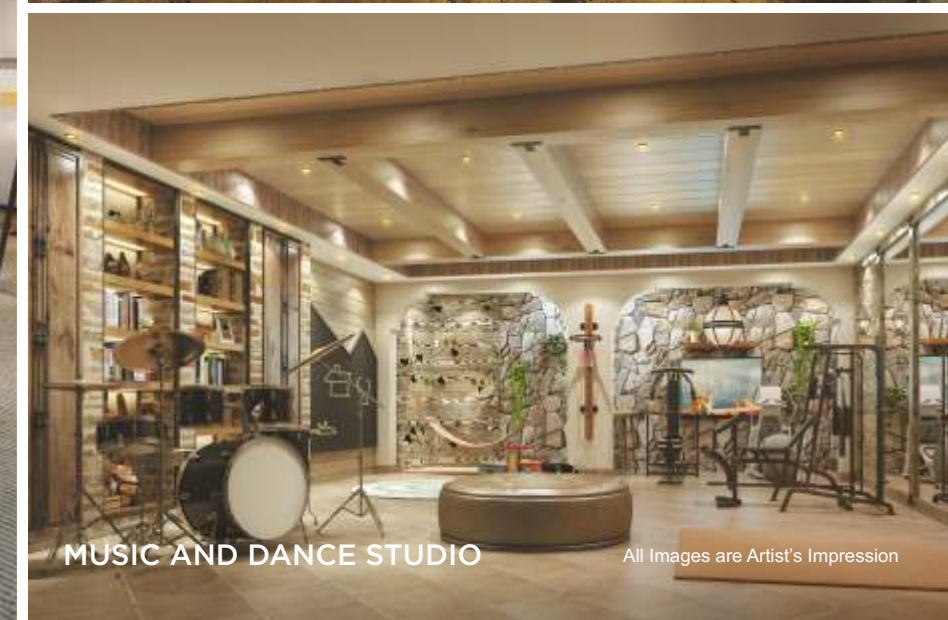
CHILDREN'S CRECHE



WELL-STOCKED LIBRARY



FOOD COURT & CAFE



MUSIC AND DANCE STUDIO

All Images are Artist's Impression

FEEL THE PRIDE OF  
YOUR ARRIVAL EVERY DAY

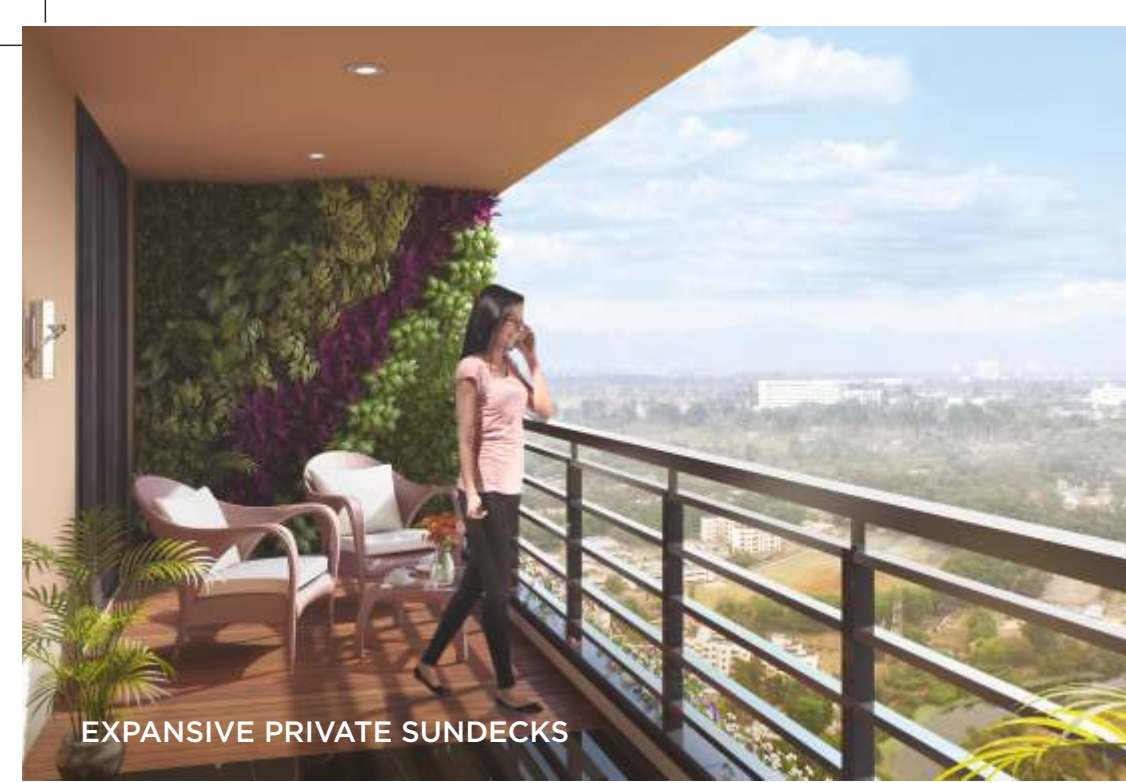
SAI WORLD CITY

THE GRAND ENTRANCE WITH DESIGNER FOUNTAINS AND SCULPTURES



DOUBLE-HEIGHT DESIGNER LOBBY

All Images are Artist's Impression



EXPANSIVE PRIVATE SUNDECKS



DESIGNER BEDROOM



LAVISH LIVING ROOM



DESIGNER BATHROOM WITH BRANDED SANITARY WARE & FIXTURES



24X7 SECURITY PERSONNEL



SURVEILLANCE CAMERAS



INTERCOM & VIDEO DOOR PHONE

All Images are Artist's Impression



TYPICAL FLOOR PLAN (PHASE 1) - MARINA



TYPICAL FLOOR PLAN (PHASE 1) - OPERA





# TYPICAL FLOOR PLAN (PHASE 1) - ACROPOLIS

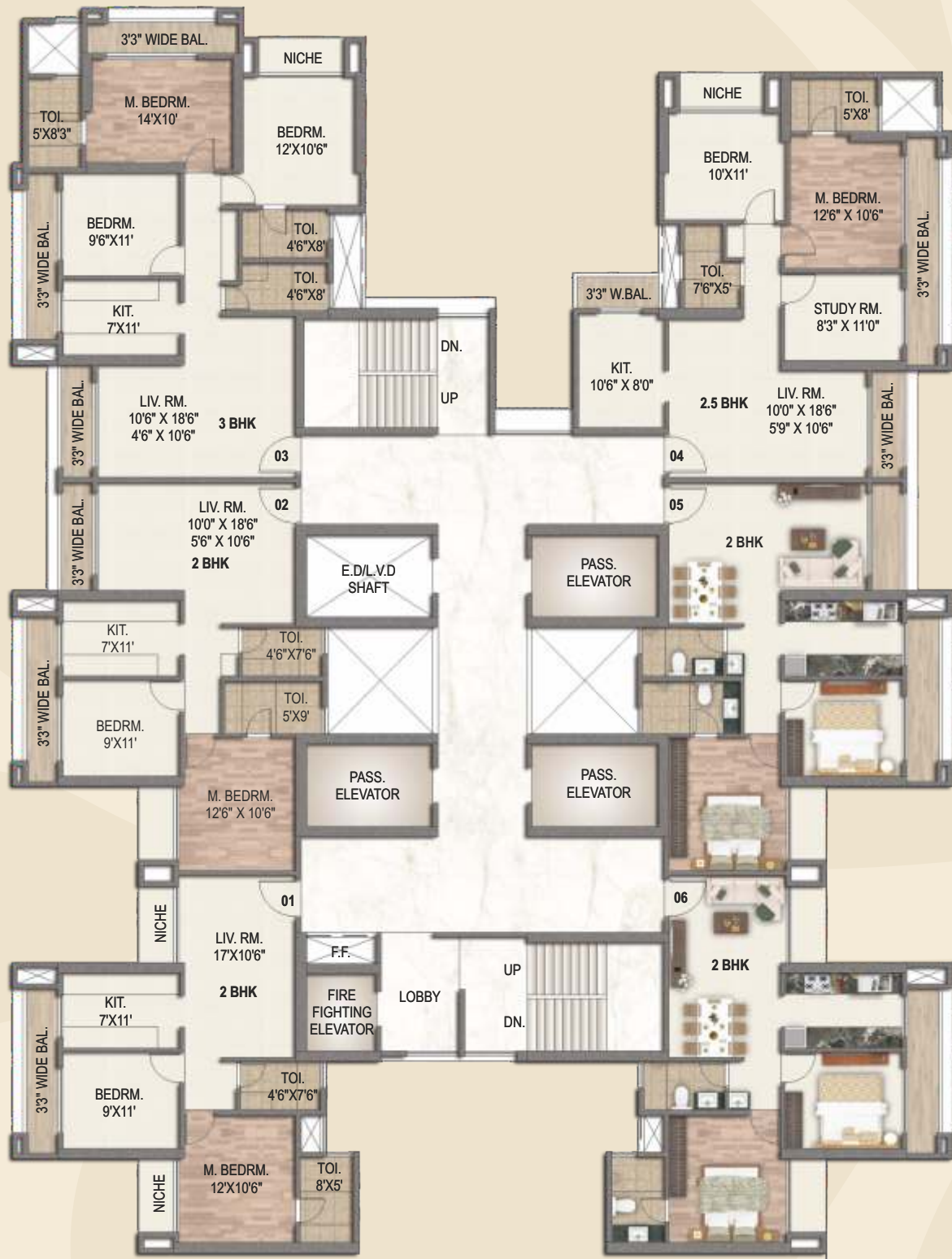


# TYPICAL FLOOR PLAN (PHASE 1) - MANHATTAN





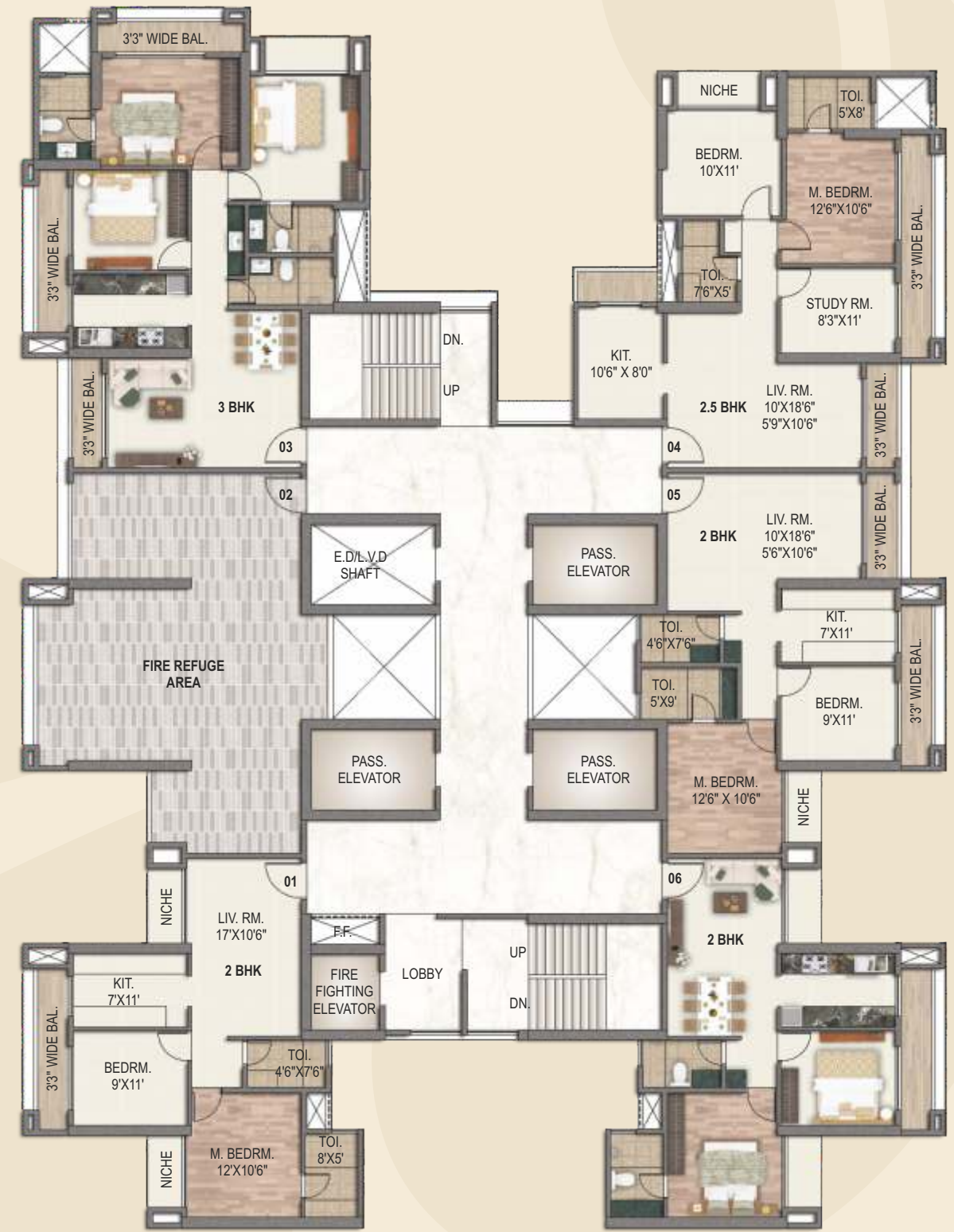
**TYPICAL FLOOR PLAN (PHASE 2) - PALAZZO**  
 3<sup>RD</sup> TO 6<sup>TH</sup>, 8<sup>TH</sup> TO 11<sup>TH</sup>, 13<sup>TH</sup> TO 16<sup>TH</sup>, 18<sup>TH</sup> TO 21<sup>ST</sup>, 23<sup>RD</sup> TO 26<sup>TH</sup>, 28<sup>TH</sup> TO 30<sup>TH</sup>



HILL VIEW  
 PODIUM VIEW



**TYPICAL FLOOR PLAN (PHASE 2) - PALAZZO**  
 7<sup>TH</sup>, 12<sup>TH</sup>, 17<sup>TH</sup>, 22<sup>ND</sup> & 27<sup>TH</sup>



HILL VIEW  
 PODIUM VIEW







**TYPICAL FLOOR PLAN (PHASE 2) - BELLAGIO**  
 3<sup>RD</sup> TO 6<sup>TH</sup>, 8<sup>TH</sup> TO 11<sup>TH</sup>, 13<sup>TH</sup> TO 16<sup>TH</sup>, 18<sup>TH</sup> TO 21<sup>ST</sup>, 23<sup>RD</sup> TO 26<sup>TH</sup>, 28<sup>TH</sup> TO 30<sup>TH</sup>



HILL VIEW

PODIUM VIEW

HILL VIEW



**TYPICAL FLOOR PLAN (PHASE 2) - BELLAGIO**  
 7<sup>TH</sup>, 12<sup>TH</sup>, 17<sup>TH</sup>, 22<sup>ND</sup> & 27<sup>TH</sup>

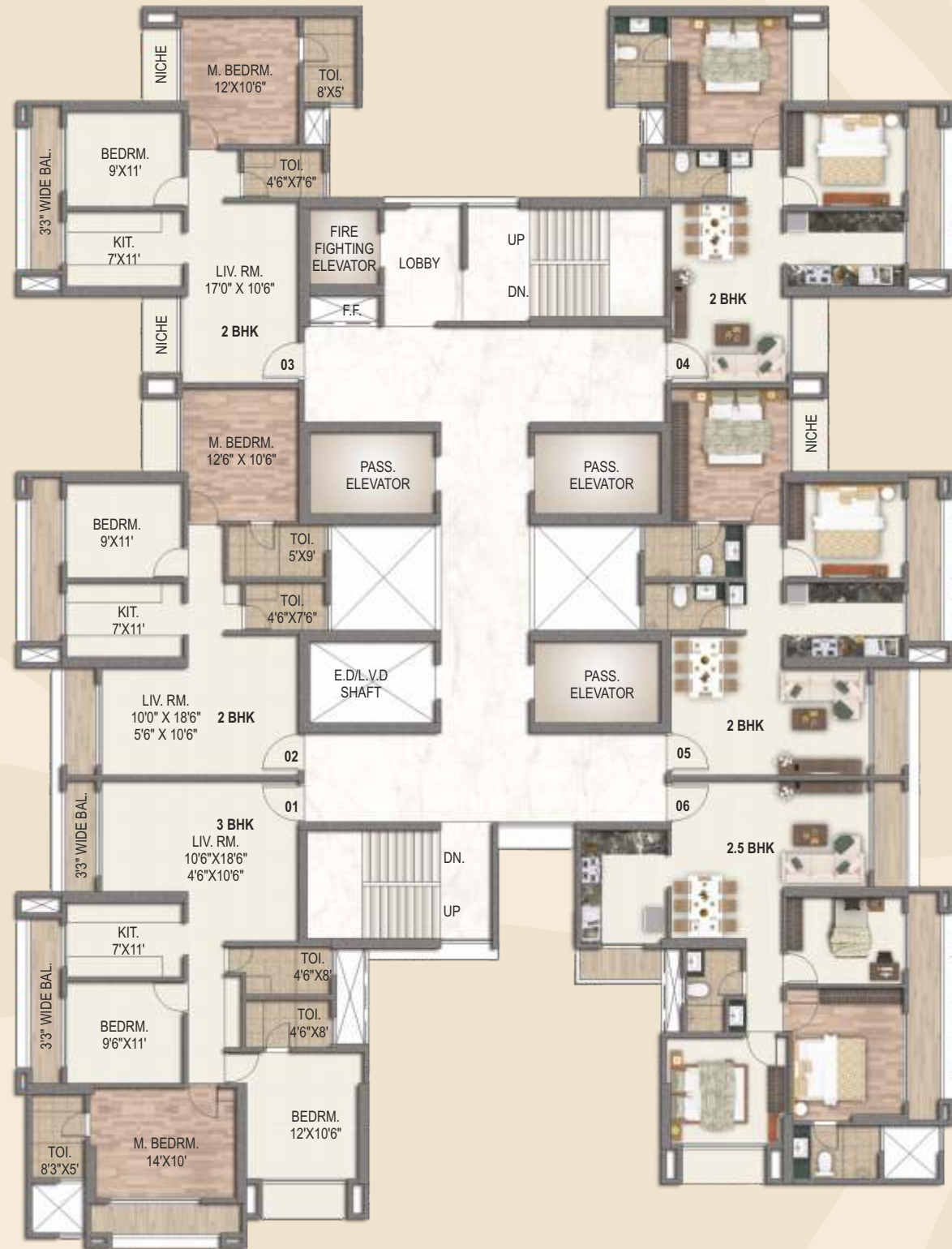


HILL VIEW

PODIUM VIEW



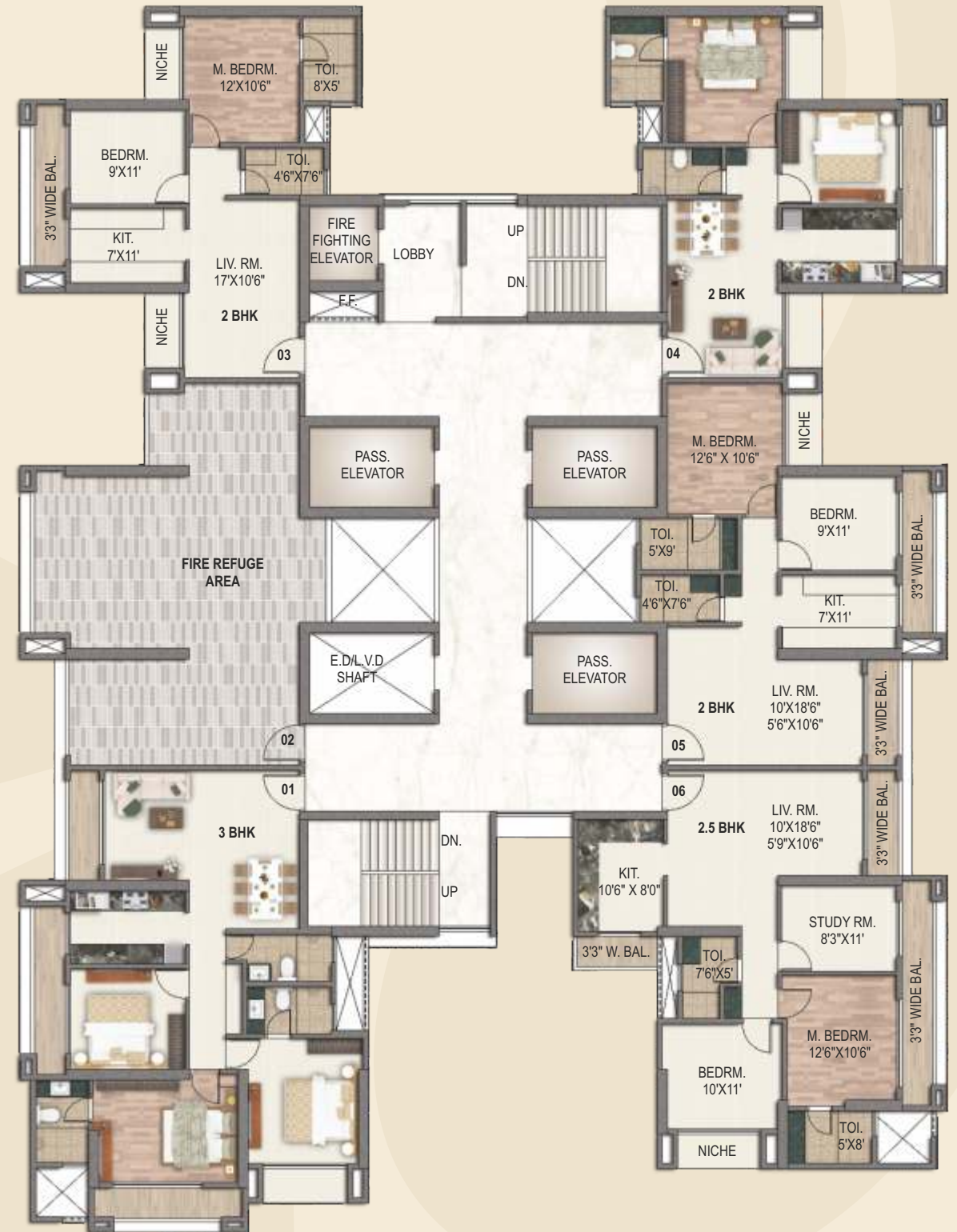
**TYPICAL FLOOR PLAN (PHASE 2) - BASILICA**  
 3<sup>RD</sup> TO 6<sup>TH</sup>, 8<sup>TH</sup> TO 11<sup>TH</sup>, 13<sup>TH</sup> TO 16<sup>TH</sup>, 18<sup>TH</sup> TO 21<sup>ST</sup>, 23<sup>RD</sup> TO 26<sup>TH</sup>, 28<sup>TH</sup> TO 30<sup>TH</sup>



HILL VIEW



**TYPICAL FLOOR PLAN (PHASE 2) - BASILICA**  
 7<sup>TH</sup>, 12<sup>TH</sup>, 17<sup>TH</sup>, 22<sup>ND</sup> & 27<sup>TH</sup>



HILL VIEW



PODIUM VIEW

# PARADISE GROUP

PERFECT PAST,  
PRESTIGIOUS PRESENT,  
PROGRESSIVE FUTURE



It's been a long yet fruitful journey for Paradise Group. We began more than three decades ago with a clear aim of providing lavish and appealing spaces for all to dwell. We have come a long way after constructing more than 100 successful projects across Navi Mumbai as of today's date. This rendezvous of more than 32 years has made us a team of highly experienced construction experts. Keeping abreast with the latest technology and implementation of world-class techniques are the reasons why our structures are not just luxuriously designed marvels, but also perfect specimens of 'beauty with quality'.

With structures that are a beautiful mix of high-end luxuries and modern amenities pose an elegant touch of culture, we have attempted to make this world a better place to live in. Our past has been glorious and made us proud in constructing 5 Million Sq. Ft. of land area that gave our customers best places to live an enhanced life. At present we are developing over 12.5 Million Sq. Ft. of land area across prime locations of Navi Mumbai and MMR like Kharghar, Panvel, Dombivli, Upper Kharghar, Kalyan NX and Lonavala providing highly innovative, state-of-the-art construction for the classes as well as the masses. With an extremely progressive attitude, today we are forging ahead towards a bright future with a massive land bank of another 12.5 Million Sq. Ft. through which we are committed to bring in a big change in present housing concepts. We are sure that our sincere efforts towards making this world a 'Paradise' will definitely become a pleasant reality in the near future.

Artist's Impression



## COMPLETED PROJECTS

LIFESTYLES THAT STAND  
AS ELOQUENT  
TESTIMONIALS TO PERFECTION

 <p>ACTUAL PHOTOGRAPH</p> <p><b>SAI SPRING</b> KHARGHAR</p> <p>G+29 Storeyed Tower</p>	 <p>ACTUAL PHOTOGRAPH</p> <p><b>SAI CRYSTALS</b> KHARGHAR</p> <p>G+30 Storeyed Tower with 2 Wings</p>	 <p>ACTUAL PHOTOGRAPH</p> <p><b>SAI SOLITAIRE</b> KHARGHAR</p> <p>G+30 Storeyed Tower</p>	 <p>ACTUAL PHOTOGRAPH</p> <p><b>SAI WONDER</b> KHARGHAR</p> <p>G+18 Storeyed Tower</p>	 <p>ACTUAL PHOTOGRAPH</p> <p><b>SAI MOKSH</b> KHARGHAR</p> <p>G+22 Storeyed Tower</p>	 <p>ACTUAL PHOTOGRAPH</p> <p><b>SAI MIRACLE</b> KHARGHAR</p> <p>G+30 Storeyed Tower with 2 Wings</p>
 <p>Artist's Impression</p> <p><b>SAI FORTUNE</b> ULWE</p> <p>G+13 Storeyed Tower</p>	 <p>Artist's Impression</p> <p><b>SAI SAHIL</b> ULWE</p> <p>G+12 Storeyed Tower</p>	 <p>Artist's Impression</p> <p><b>SAI GANGA</b> ULWE</p> <p>G+13 Storeyed Tower</p>	 <p>Artist's Impression</p> <p><b>SAI JEWEL</b> KHARGHAR</p> <p>G+18 Storeyed Tower</p>	 <p>Artist's Impression</p> <p><b>SAI SAPPHIRE</b> ULWE</p> <p>G+7 Storeyed 2 Towers with 4 Wings</p>	
 <p>ACTUAL PHOTOGRAPH</p> <p><b>SAI MANNAT</b> KHARGHAR</p> <p>G+26 Storeyed Tower</p>		 <p>Artist's Impression</p> <p><b>SAI HARMONY</b> ULWE</p> <p>G+7 Storeyed Tower with 4 Wings</p>	 <p>Artist's Impression</p> <p><b>SAI PEARLS</b> KHARGHAR</p> <p>G+15 Storeyed 2 Towers</p>		



# ONGOING PROJECTS

## LANDMARKS POISED TO BECOME BENCHMARKS



### SAI WORLD DREAMS

DOMBIVLI

18 Acre Global Community



### SAI SUN CITY

UPPER KHARGHAR

27 Acre Themed Township



### SAI WORLD EMPIRE

KHARGHAR

18 Acre Kingdom



### PARADISE MALL

KHARGHAR

Commercial Mall with G+2 Storeys



### SAI WORLD RETREAT

LONAVALA

Exclusive 3 BHK Duplex Villas



### SAI WORLD LEGEND

KALYAN NX

A Magnificent High-rise Tower



### SAI SYMPHONY

KHARGHAR

G+23 Storeyed Tower



### SAI AARADHYA

KHARGHAR

G+21 Storeyed Tower



### SAI ICON

KHARGHAR

G+12 Storeyed Tower



# PANVEL

## A WORLD OF PRIVILEGES, A CITY OF FUTURE

### ADVANTAGEOUS INFRASTRUCTURE DEVELOPMENTS AROUND MEGA CITY PANVEL



Navi Mumbai International Airport (NMIA)  
The largest "GREENFIELD", state-of-the-art International Airport sprawled over approx 1200 hectares



Mumbai Trans-Harbour Link  
India's Longest Sea Bridge (21.8 Kms), connecting Mumbai, Navi Mumbai & NMIA from Sewri to Nhava Sheva



Virar-Alibaug Multimodal Corridor (VAMC)  
8 lane mega corridor planned in two phases, Phase 1 connecting Virar to Panvel (90 KM), and Phase 2 from Panvel to Alibaug (50 KM)



Panvel-Karjat Suburban Railway Route  
Connecting Karjat and Panvel to ensure easy access across Mumbai, Nashik, LonaVala



CST- Panvel Fast Line Elevated Corridor  
Ensuring ease of travel time of Panvel & CST and offer an elevated fast railway service with air-conditioned coaches



New Coastal Road  
6 lane rapid transit corridor will excellently connect Kharghar with Navi Mumbai International Airport



Navi Mumbai Special Economic Zone (NMSEZ) & MIDC  
Enhancing the business with ease of transportation while creating numerous job opportunities for all



Mumbai-Pune Expressway  
6 lane expressway spanning across 94.5 KMS, ensures best connectivity and easy reach to Pune



Proposed 16 Platform Panvel Railway Terminus  
Not only will ensure ease of travelling outside Navi Mumbai but will become major terminus of Mumbai



Jawaharlal Nehru Port Trust (JNPT)  
Proximity to India's largest container port also known as Nhava Sheva ensures better business opportunities within reach



Major Schools, Colleges, Hospitals & Malls in Vicinity  
Prominent landmarks like DPS, DAV Public School, Amity University, MGM College of Medical & Engineering, MGM Hospital, Lifeline Hospital, Orion Mall, PVR Cinemas, Big Bazaar, D Mart in vicinity